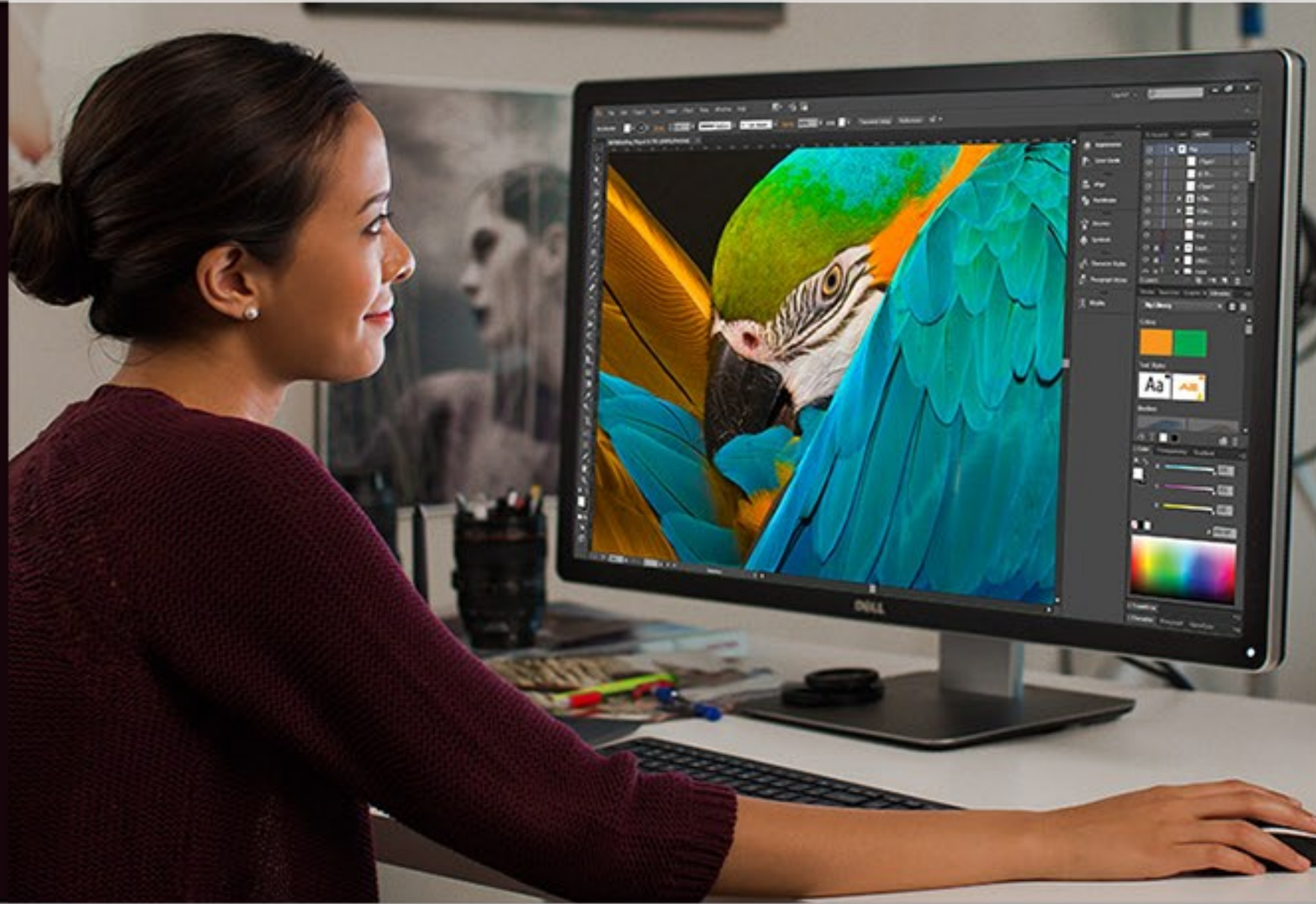


Dell 32" Ultra HD 4K LED - UP3216Q



Specifications

Connectivity		DP, mDP, HDMI (MHL), 4 x USB3 with one charging port, 1 x USB3 upstream, Media Card Reader
Display	Diagonal Viewing Size:	31.5 inch
	Aspect Ratio:	Widescreen (16:9)
	Panel Type, Surface:	In-Plane Switching
	Optimal resolution:	3840 x 2160 @ 60Hz
	Active Display Area (H x V):	273,996 sq-mm (424.7 sq-inches)
	Contrast Ratio:	1000 to 1 (typical), 2 Million to 1 (dynamic)
	Brightness:	300 cd/m ² (typical)
	Response Time:	6ms fast mode . GTG
	Viewing Angle:	178° vertical / 178° horizontal
	Adjustability:	Tilt, Swivel, Height Adjust
	Color Support:	1.07 billion colors
	Pixel Pitch:	0.182 mm
	Backlight Technology:	LED light bar system
	Display Type:	Widescreen Panel Display
	Display Screen Coating:	Anti-Glare with 3H hardness
	Audio Output:	Yes
Size & Weight		
	Height (With Stand)	482.6 mm (19.0 inches) / 572.4 mm (22.5 inches)
	Height (Without Stand)	444.6 mm (17.5 inches)
	Width (With Stand)	749.9 mm (29.5 inches)
	Width (Without Stand)	749.9 mm (29.5 inches)
	Depth (With Stand)	214.0 mm (8.4 inches)
	Depth (Without Stand)	51.5 mm (2.0 inches)
	Weight	8.6 kg (18.92 lb)
Electrical		
	Voltage Required:	100 to 240 VAC/50 or 60 Hz ± 3 Hz/1.7 A (Max.)
	Power Consumption (Operational):	70 W (typical), 93.4 W (Energy Star)