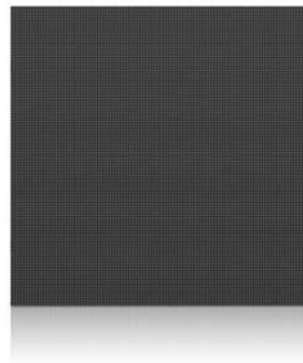


A3 Pro



Absen 2nd Generation Calibration



High refresh rate



High-definition



Easy maintenance



Easy installation



User-friendly



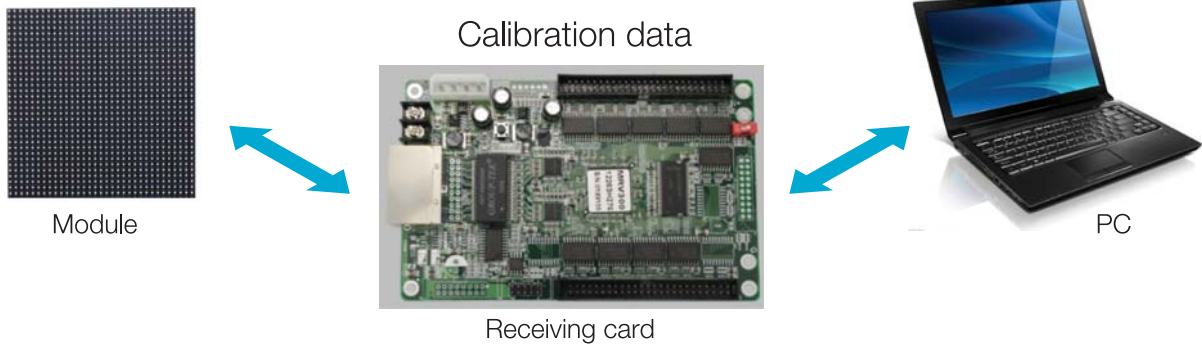
Light weight



Noise-free

Replace modules, unnecessary to re-calibrate

Once calibration, all the relative data will be loaded into the receiving cards and modules, replace modules or receiving cards, unnecessary to re-calibrate, saving your labor and time cost.



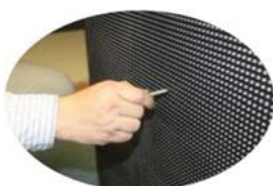
Seamless mosaic with adjustable brightness and color temperature

The panel cabinets are precision manufactured using CNC machines, and the special high-quality panel connectors create a seamless image mosaic. The displays have an intelligent control system for intelligent adaptive brightness and color temperature control based on the ambient lighting, which creates a high-quality display effect.



Thin & light weight panels easier maintenance

Each Panel has been carefully crafted and only weighs 9.2kg. Front-side maintenance, improved power module design and superior connectors ensure that maintenance efficiency is tripled.



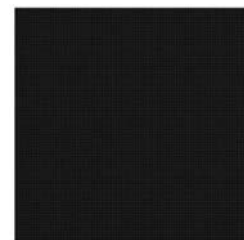
Insert the tool



Clockwise



Pull



Automatic matched by the magnet design.

High refresh rate

Above 2000Hz high refresh rate, with 1/2000 second shutter camera or video camera, still keep no water wave, no flash line, no shaking, completed gray scale. It will successfully solve the problem of the gray-scale loss under the high refresh rate situation.



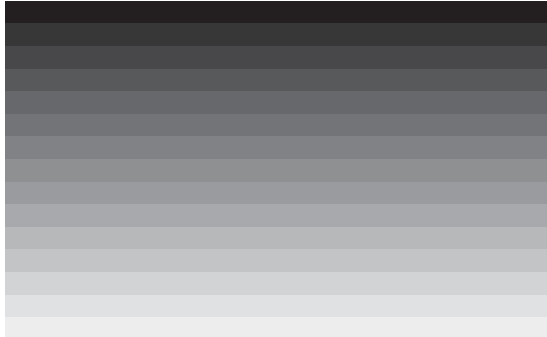
High refresh rate



Low refresh rate

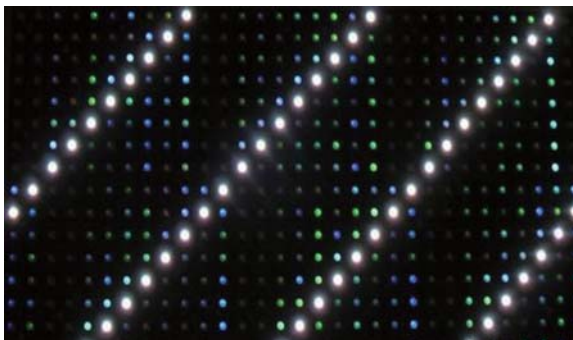
Low grayscale consistency and brightness uniformity

A3 content display features superb uniformity under the low grayscale situation, ensuring the display effect consistency and brightness uniformity.



No Ghost Line

No smear phenomenon, automatic shadow elimination.



Parameters

Visual characteristics

Pixel pitch	3.9	mm
Pixel configuration	SMD 3 in 1	--
Brightness	≥1200	nits
Refresh frequency	≥2000	Hz
Gray scale	32768	level
Colors	35	trillion
Ingress protection (Front / Rear)	IP40/IP21	--
Viewing angle (H/V)	140/140	deg.
Power consumption (max/avg)	540/180	w/sq.m.

Modular characteristics

Cabinet size (W×H×D)	500×500×96	mm
Cabinet weight	20.2	Lbs
Cabinet panel material	Aluminum-alloy	
pixel matrix per cabinet	128×128	pixels

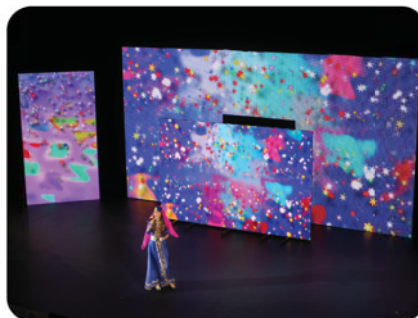
Environment

Input voltage (AC)	110 ~ 240 V	V
Operating temperature	-10 ~ +40	°C
Signal input format (with video processor)	AV, S-Video, VGA, DVI, HDMI, SDI,DP	

★ Shenzhen Absen Optoelectronic Co., Ltd. reserves the right to modify product design, specifications, and parameters without further notice. Photos are used for illustration purpose only as products may differ from these photos. All rights reserved by Shenzhen Absen Optoelectronic Co., Ltd.

Applications

Indoor stages, exhibitions and where need HD indoor displays. TV stations, concerts, theme parks, exhibitions and so on where needing HD displays, install and dismantle, easily.



Shenzhen Absen Optoelectronic Co., Ltd

Add: Absen Building, Huawei Industrial Park, Bantian, Longgang District, Shenzhen 518129, P.R.China

Tel: +86-755-89747399 E-mail: absen@szabsen.com

Fax: +86-755-89747599 Website: www.szabsen.com

Absen American Inc.

Add: 7703, Kingspointe Parkway, Suite 600, Orlando, FL 32819

Tel: +1-407-730-0977 E-mail: mike@szabsen.com

Fax: +1-407-203-8873 Website: www.usabsen.com

Absen GmbH

Add: Eisenstrasse 5, 65428 Russelsheim(Frankfurt), Germany

Tel: +49(0)6142 920 87 56 Fax: +49(0)6142 920 87 57

Website: www.szabsen.com